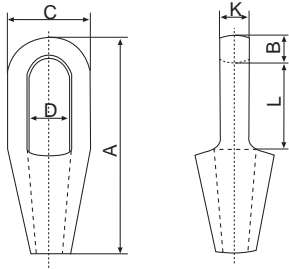




Closed Spelter Sockets

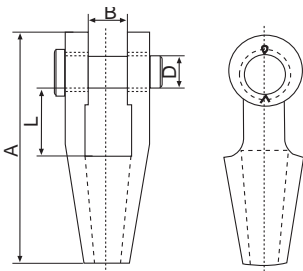
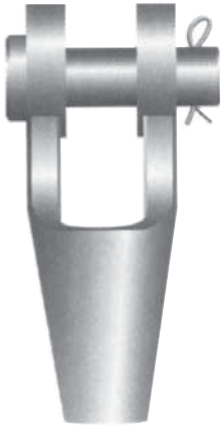
- Material: GSt 52-3
- Safety factor: 5 times WLL = minimum breaking strength
- Finish: Painted or galvanised



Working load Limit	Dia wire Rope	Overall Length A	Overall Width C	Inside Bow Width D	Inside Bow Length L	B	Thickness Bow K	Approx Mass Per pce
Tonne	mm	mm	mm	mm	mm	mm	mm	kg
6	20-22	255	92	47	90	33	38	3.7
10	24-26	254	105	57	99	36	45	5.7
14	28	282	114	63	116	39	51	7.5
17.5	32-35	318	127	72	130	43	58	11
20	38	358	139	77	144	53	70	13
28	40	390	147	82	169	52	70	16
40	44-48	454	171	89	198	55	76	26
45	52-54	522	194	96	224	62	82	36
60	52-60	548	218	109	247	73	94	48
75	64-67	598	241	142	275	80	104	64
80	70-73	648	273	159	286	80	124	100
90	76-79	692	291	172	310	80	134	125
100	83-86	743	311	184	311	102	146	147
115	89-92	787	330	197	330	102	159	181
160	95-102	845	362	216	356	108	178	245

Open Spelter Sockets

- Material GSt 52-3
- Safety factor: 5 times WLL = minimum breaking strength
- Finish: Painted or galvanised



Working Load Limit	Dia Wire Rope	Overall Length A	Inside Width B	Pin Dia D	Inside Length L	Approx Mass Per pce
Tonne	mm	mm	mm	mm	mm	kg
5	18-19	205	38	35	64	3.2
6.3	20-22	235	43	41	69	4.7
10	23-26	275	45	51	71	7
14	27-30	307	59	57	88	11
17	31-36	339	63	63	97	15
20	37-39	409	76	70	132	21
28	40-42	416	76	76	128	25
40	43-48	468	89	89	134	39
45	49-54	552	103	95	181	57
60	55-60	603	112	108	203	75
75	61-68	653	127	121	213	114
80	69-75	696	133	127	216	143
90	76-80	740	145	134	225	172
100	81-86	776	159	140	228	197
115	87-93	834	171	152	242	255
160	94-102	905	191	178	254	355